

*"Chrÿs' work reminds us of the Art that is photography"*

– Marianna Tegge, Jurist / Art Director  
Wings and Water Festival

Many photographers focus the entire body of their work upon a particular subject - at

## images-imágenes

photography by  
Chrÿs Garnant

the focus is on  
the emotions of light and colour -

its dramatic movements –  
and quiet stillnesses  
its astounding vibrances –  
and soft subtleties  
its crisp reflections –  
and liquid transparencies

It is an exciting, wondrous view of the world oft forgotten or overlooked. I hope you or someone very special to you will also be able to share in this vision through —

an image or image group available  
at one of our exhibitions or shows,  
on the web,  
via personal consultation,

through leasing for your professional office, or  
at a cooperating gallery,

*Chrÿs*

## Images

Images from **images-imágenes** are available in various sizes and mounts – limited edition/reserved, archival prints (8x10 thru 20x36) and open editions in smaller finished sizes. Gallery Mount images (8x10, 11x14, 14x18, 18x22) are offered to create coordinated display galleries. Multiple size offerings make it easy to create group arrangements as well as to fit your budget and design needs.

Considerable care is given to mount each print with specific colour-coordinated mats – not just a dab of colour – the entire mat set is designed to bring out the emotion of the image. It is an essential part of the total presentation.

Hand-rubbed, oil finished, American Beauty Frames™, crafted by the artist from solid American Black Walnut, White Oak, etc., as appropriate to the image, are available to compliment select limited and reserved edition images.

## Image Leasing

With an image leasing arrangement, your professional office landscape is refreshed quarterly or semi-annually.

Framed images are rotated from a subscription group of your choosing. You save time, expense, and enjoy the benefits and tax advantages. See -

[www.images-imagenes.com/leasing.shtml](http://www.images-imagenes.com/leasing.shtml)

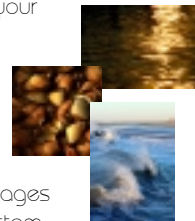
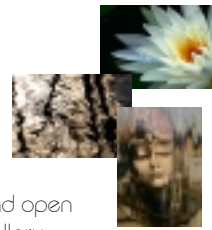
## Gallery Services

Prints from **images-imágenes** add a unique vision to your gallery exhibit - expanding your client list and sales. Gallery services include consultation / rotation to enhance your offerings, express custom order and large order group support for you and your art buyers.

## Special Offerings

**gallerie images-imágenes** is much more than individual prints. Selected images are offered in coordinated groups. Custom Holiday Greeting Cards are available. Browse these or print out the custom holiday greeting card order form at –

[www.images-imagenes.com](http://www.images-imagenes.com)



## About the Artist

Chrÿs was graduated from the Iowa State University College of Design. There her passion in the search for contrasts and subtleties in colour, light and form was evoked and sharpened.

Chrÿs Garnant works in medium format and digital photographic media. After her decades-old Voigtländer died several years back, she embraced the 21st Century and the digital darkroom. She still uses her Mamiya 645 where detail and luminance demand - for images of astounding scope and vibrance.

## Recent Awards

### [First Place - Photography](#)

Art in the Park, Long Branch, NJ, 2005

### [Second Place](#)

Photography / Coastal Scenic

The Wetlands Institute - Wings and Water Festival, 2005

### [Award - Fine Arts](#)

Visual Arts Celebration, E. Brunswick, NJ, 2005

### [First Place](#) and [Honorable Mention](#) -

Photography / Coastal Scenic

The Wetlands Institute - Wings and Water Festival, 2004

### [First Place - Photography](#)

Art in the Park, Long Branch, NJ, 2003

### [First Place](#), [Second Place](#), and [Honorable Mention](#) -

Photography / Coastal Scenic

The Wetlands Institute - Wings and Water Festival, 2003

### [Award - Architectural Photography / B&W](#)

Monmouth Architectural Photography Competition, 2003

## Visit the Gallery at

[www.images-imagenes.com](http://www.images-imagenes.com)

Click on the **gallery** menu item to

[open a room map of the gallery](#)

Click on the **images alacarte** sidebar link to

[open the image browser](#)

Click on the **exhibit and show schedule** sidebar link to

[locate the next show in your area](#)

Images shown  
in this brochure  
include -

*Gelb Weiss* / [C0424055-BS-L](#)

*Reflecting in Liquid Light* / [D0325056-DS-L](#)

*Antediluvian Dreams* / [C0424028-BS-L](#)

*Palmea Intercross* / [C0424086-PS-L](#)

*Paradise Enlightened* / [D0326154-BS-L](#)

*Umber and Amber Gold* / [D0340186-CY-L](#)

*Shell Shock Sunset Gold* / [D0337023-ES-U](#)

*Cape May Confrontation at Dawn* / [D0320162-CS-P](#)

*Blizzard Shadows* / [D0328017-BS-P](#)

## About Your Print

### image care -

All colour photographic prints are produced with colour dyes that can change over time due to the environment where they are stored and displayed. UV and even very bright tungsten light, excess humidity, and household pollution (e.g., chlorine, ammonia, and especially ozone) can prematurely age and fade an unprotected photograph. *Never* display any photograph where exposed to sunlight, strong fluorescent light, or very bright tungsten light. *Always* display photographs under either glass or UV-absorbent plexiglass. *Always* ask your framer to seal the back of any frame. *Avoid* excess humidity - it is a catalyst for adverse chemical reactions from household and environmental pollutants.

### image size -

Prints from **images-imágenes** are priced by *finished size* - the size of the mat/mount and the frame. The *nominal* and *actual* image sizes are, therefore, smaller. Most images are sized to match traditional, commercially-available frames and mats.

Prints from **images-imágenes** are sized to fit inside the mat window opening - *all* of the photograph is visible - nothing is overlaid by the mat. Thus, the *actual* image size is usually printed slightly smaller than the mat window. Prints from your local photo-finishing lab may have as much as 20% of the image hidden by the typical mat!

### mount and mat styles -

Images are offered in the following mounts -

- traditional mount
- gallery or *museum* mount
- gallery-set mount

In a *traditional* mount, images and frames are oriented in the same direction, with traditional mat widths. With a *gallery* or *museum-style* mount, the rectangular frame is always oriented vertically - whether the image orientation is portrait (vertical), landscape (horizontal), or uniformat (square). Larger fine art images are offered as *gallery-set* mounts in coordinated size groups.

*Gallery/Museum* mounted images are especially effective for creating dramatic group arrangements with images of any size *and* orientation. With narrow, equally-sized mat borders, *Gallery-Set* mounted images from individual size groups may be easily composed into pleasing wall displays.

For additional information on image care, warranty/reprints, and mount-mat styles, please view the guide at

[www.images-imagenes.com/guide/index.shtml](http://www.images-imagenes.com/guide/index.shtml)



gallerie images-imágenes  
photography by  
Chrys Garnant

110 Kings Hwy  
Middletown, NJ 07748-2024

# images-imágenes

[www.images-imagenes.com](http://www.images-imagenes.com)

photography by  
Chrys Garnant

*sustenance for the soul* - images for your home  
image leasing for your professional office  
gallery support services

a unique,  
award-winning vision of  
stunning fine art colour photography